

CITY OF LOS ANGELES

DEPARTMENT OF RECREATION & PARKS

A nighttime photograph of Griffith Park in Los Angeles. The foreground shows the city lights and the park's infrastructure. In the background, a large fire is visible, illuminating the sky with orange and red hues. The text is overlaid on this image.

GRIFFITH PARK FIRE RECOVERY

TASK FORCE BRIEFING FOR GREATER GRIFFITH PARK NEIGHBORHOOD COUNCIL

JANUARY 28, 2008

**MAYOR ANTONIO R. VILLARAIGOSA
COUNCILMAN TOM LABONGE, CD 4
GENERAL MANAGER JON KIRK MUKRI**

OVERALL GOAL

The goal of the Griffith Park Fire Recovery Plan Task Force is to develop a fire recovery plan for Griffith Park that is science- and data-based.

The Recovery Plan will include fire damage and erosion control mitigation measures, as well as restoration elements that will be designed and implemented based on the results of professional assessments of damage, and potential environmental and public safety hazards resulting from the fire.

The recovery planning process will involve technical experts from various government agencies and community groups, and include soliciting advice and comments from the various parks advocacy groups, the local neighborhood associations and Neighborhood Councils.

OBJECTIVES OF COLLABORATION

- **Reduce Duplication of Efforts**
- **Synchronized Efforts**
- **Cost-Efficiency**
- **Timeliness**
- **Minimization of Environmental Damage**
- **Standardization of Data Collection Methods**
- **Sharing of Resources**

PLAN ASSUMPTIONS

Guidelines

- Environmental and Ecological Sensitivity
- Public Safety

General Methodology

- Emergency Debris Removal
- Assessments and Planning
- Natural Recovery
- Erosion Control
- Restoration

COLLABORATING ORGANIZATIONS

FEDERAL GOVERNMENT

- **U.S. Forest Service-Wildland Fire Leadership Council (Burned Area Emergency Response)**
- **CAL FIRE (California Department of Forestry and Fire Protection)**
- **National Park Service – Santa Monica Mountains National Recreation Area (SMMNRA)**
- **USDA Natural Resources Conservation Service (NRCS)**

STATE GOVERNMENT

- **Los Angeles Regional Water Quality Control Board**
- **California Department of Fish and Game**
- **California Department of Recreation and Parks**
- **California Office of Historic Preservation**
- **Southern California Air Quality Management District**
- **University of California Cooperative Extension (Agriculture and Natural Resources)**

COLLABORATING ORGANIZATIONS

LOCAL GOVERNMENT

- **Los Angeles Natural History Museum**
- **Bureau of Engineering**
- **Bureau of Sanitation**
- **Bureau of Street Services**
- **Department of Animal Services**
- **Department of General Services**
- **Department of Public Works**
- **LA County Fire Department**
- **Environmental Affairs Department**
- **Department of Water and Power**
- **LA Fire Department**
- **LA Police Department**
- **LA Zoo**
- **Million Trees LA**

COMMUNITY

- **Neighborhood Councils**
- **Griffith Park Master Plan Working Group**
- **Hollywood Beautification Team**
- **California Native Plant Society**
- **Los Angeles Conservation Corps**
- **TreePeople**
- **Additional Organizations to be added**

THREE PHASE PLAN

Phase 1: May – July 2007

Objectives: Assessments / Emergency Debris Removal / Erosion Control Design

Scope:

- **Environmental and Infrastructural Assessments**
(Soil Burn Severity, Erosion Potential, Vegetation Burn Severity, Seed Soil Bank, Property and Public Safety, Wildlife, Cultural Resources, Park Landmarks, Watershed, Geological, Hydrological, and Infrastructure Damage)
- **Digital Ortho Photography Survey**
- **GIS Map of Infrastructure, Landmarks and Resources**
- **Debris Cleanup**
- **Clean (E) Storm Drain Infrastructure**
- **Hazard Tree Removal and Rock Stabilization**
- **Design for Phase 2 Erosion Control**

THREE PHASE PLAN

Phase 2: July - December 2007

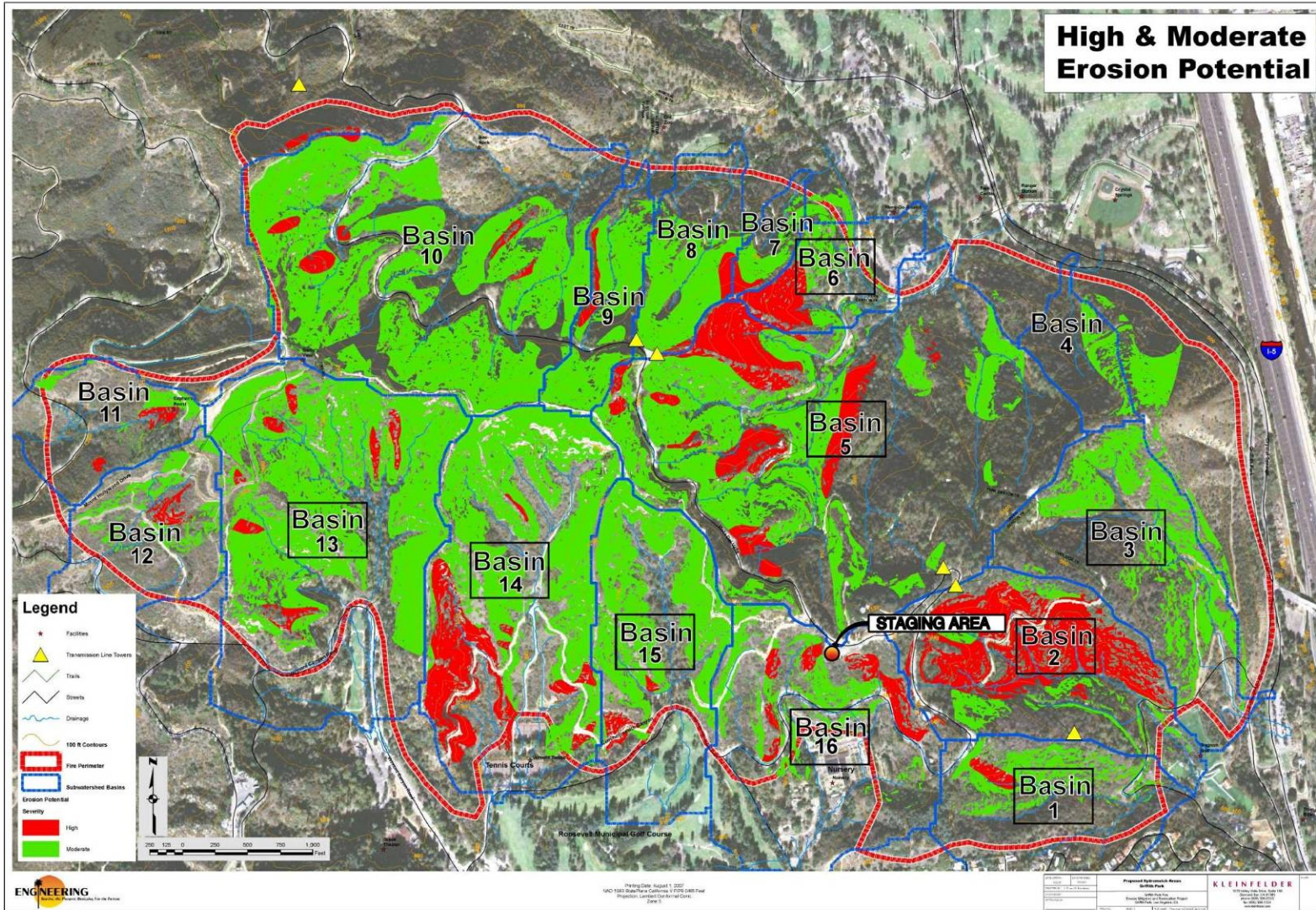
**Objectives: Mitigation: Erosion Control (Slope Stabilization/
Run-off, Debris & Soil Capture)**

Scope:

- **Replace/Repair Drainage Infrastructure**
- **Implement Erosion Control Measures**
- **Implement Debris Capture Measures**
- **Implement Watershed Protection Measures**
- **Landmark Rehabilitation**
- **Trail Repairs**

HYDROMULCH PLAN

NOTE: NO HYDROMULCH IN BASINS 4, 7, 8, 9, 10, 11 & 12



CITY OF LOS ANGELES, DEPARTMENT OF RECREATION AND PARKS - 1200 W. 7TH STREET, 7TH FLOOR, LOS ANGELES, CA 90017

PROJECT NO. DSRE0002

PROJECT NAME GREYTH PARK FIRE RECOVERY PLAN-HYDROMULCHING EROSION CONTROL PLAN

CLIENT CITY OF LOS ANGELES, DEPARTMENT OF RECREATION AND PARKS

DATE JULY 31, 2007

DESIGNER SON KIRK MALONI

CHECKER MIKE SHULL

SCALE 2.00

VICINITY MAP NOT TO SCALE



MAINTENANCE OF EXISTING CHECK DAMS TO RESTORE CAPACITY





INSTALLATION OF LOW-IMPACT TEMPORARY DEBRIS BARRIERS









PROPOSED K-RAIL PLACEMENTS AND SEDIMENT CATCH BASINS

1 OF 4



1 Location of k-rails:
at Roosevelt Golf Course } 540'

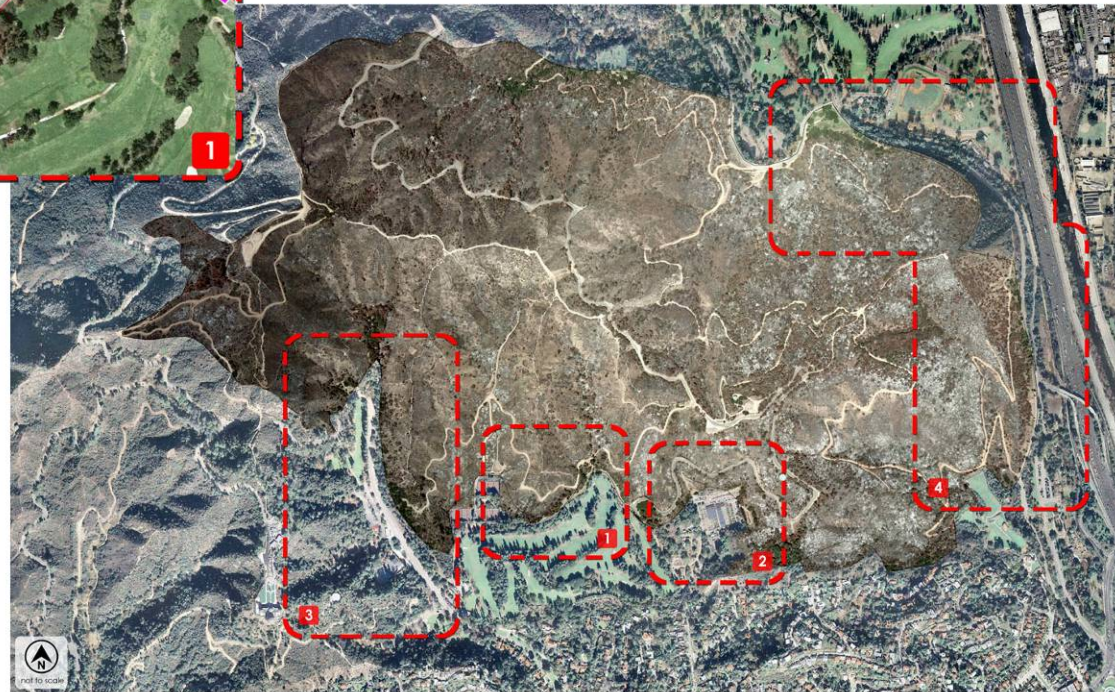


Summary of k-rail Lengths:

- 1** Total Length: 540'
- 2** Total Length: 890'
- 3** Total Length: 960'
- 4** Total Length: 4600'

Combined: 6990'

While preventive erosion and sediment control measures will be taken to keep as much of the soil in place as possible and to prevent it from flowing down and causing damage to these assets, protective measures such as the k-rails shown in these pictures will also be utilized as a back-up if preventive measures fail. Concrete k-rails and sand bags will be used to divert potential floodwaters and debris/mudflows away from the aforementioned assets.



PROPOSED K-RAIL PLACEMENTS AND SEDIMENT CATCH BASINS

2 OF 4

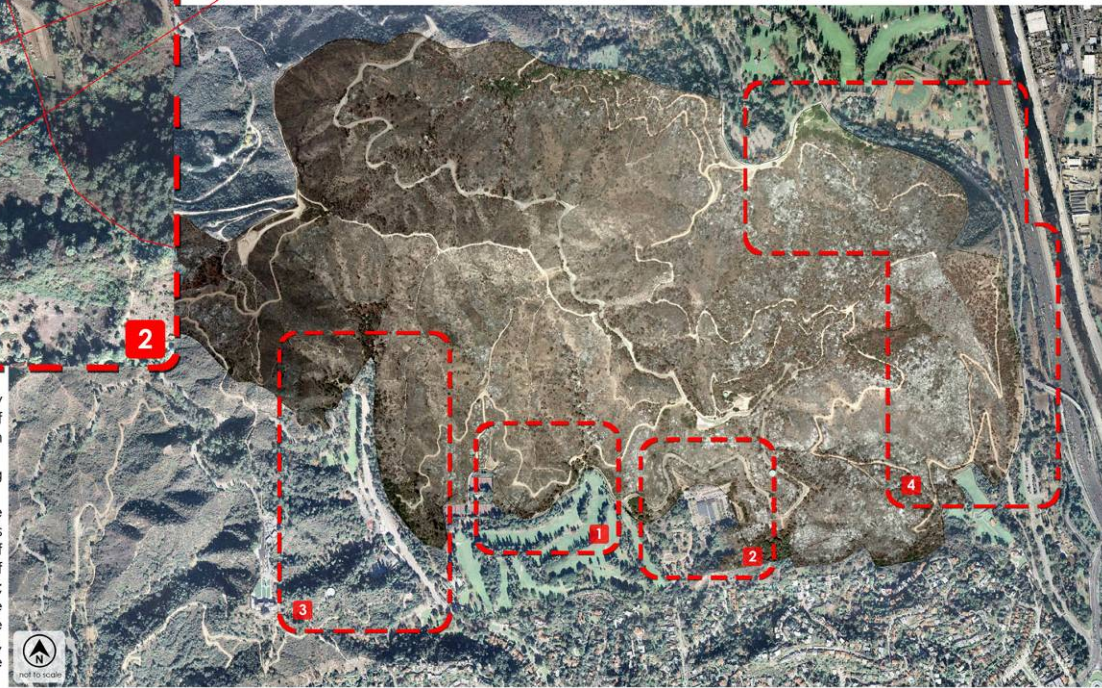


- 2** Locations of k-rails:
- at slope on right side: 100' of k-rail
 - at slope on left side: 120' of k-rail
 - at Commonwealth Nursery: 520' of k-rail
 - at road on left side: 70' of k-rail
 - at road on right side: 80' of k-rail
- } 890'



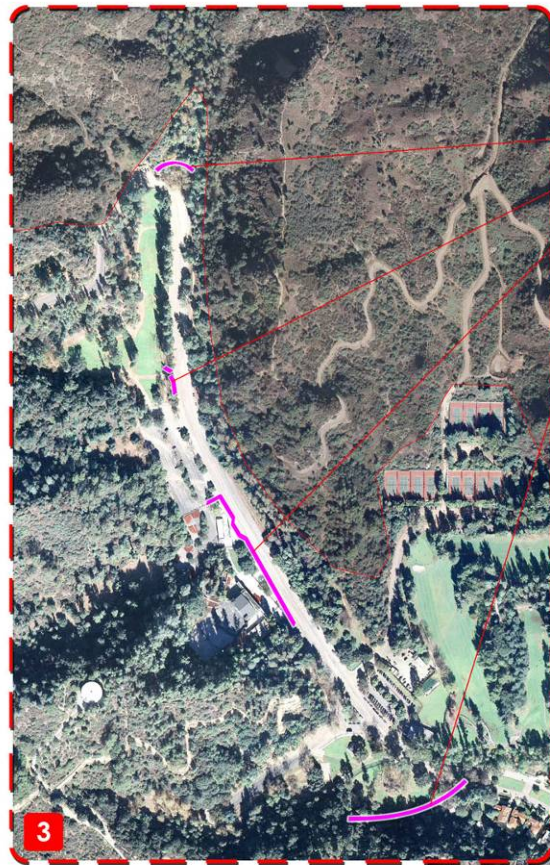
Part of Phase 1 of the Griffith Park Fire Recovery Plan was to determine what assets are now at risk of debris/mud/sediment flow damage during a rain event.

As a result of the risk assessment, the following assets were identified as being at risk:
 Greek Theater and Vermont Avenue; private homes along Vermont Avenue at park exit; tennis courts above Roosevelt Golf Course; Roosevelt Golf Course; Griffith Park Nursery; Tregnan Golf Academy; private homes along Cadman Drive; Upper Crystal Springs Drive from approximately the park entrance at Los Feliz Boulevard and Riverside Drive to the Ranger Station; The Merry-go-round, adjacent parking lot, and Ranger Station; and the Old Zoo picnic area.

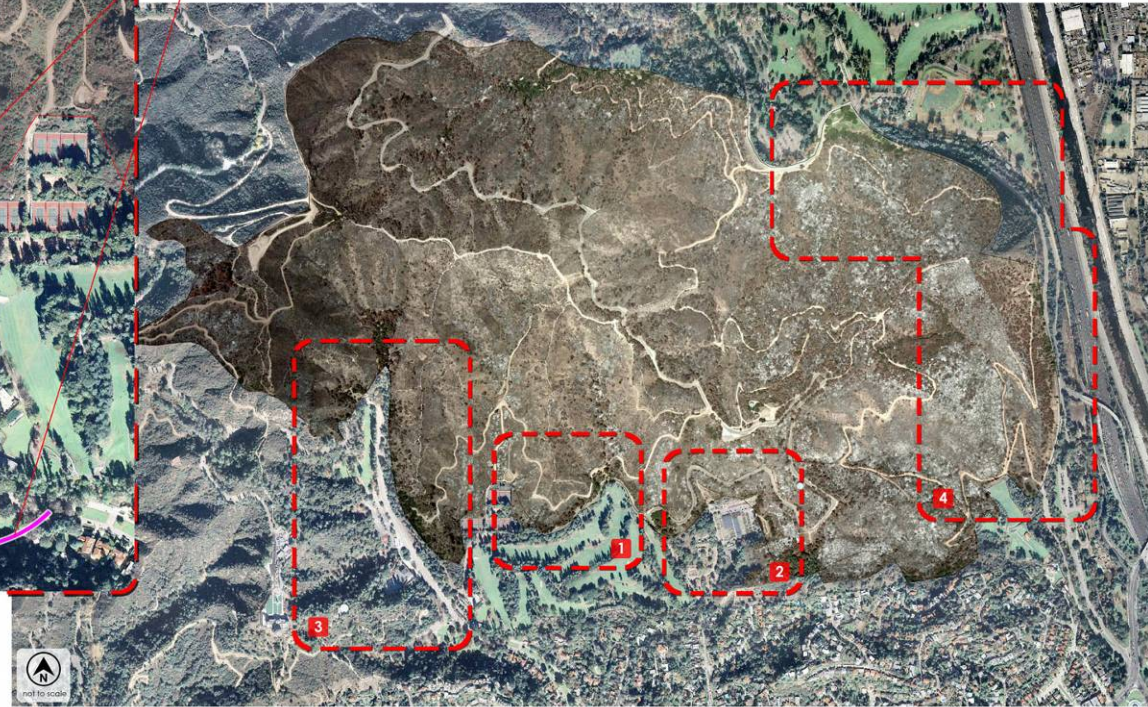
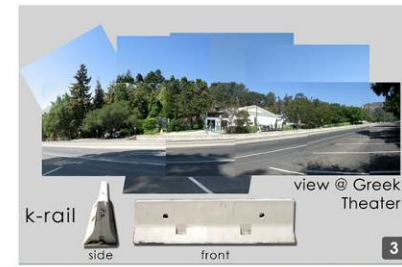


PROPOSED K-RAIL PLACEMENTS AND SEDIMENT CATCH BASINS

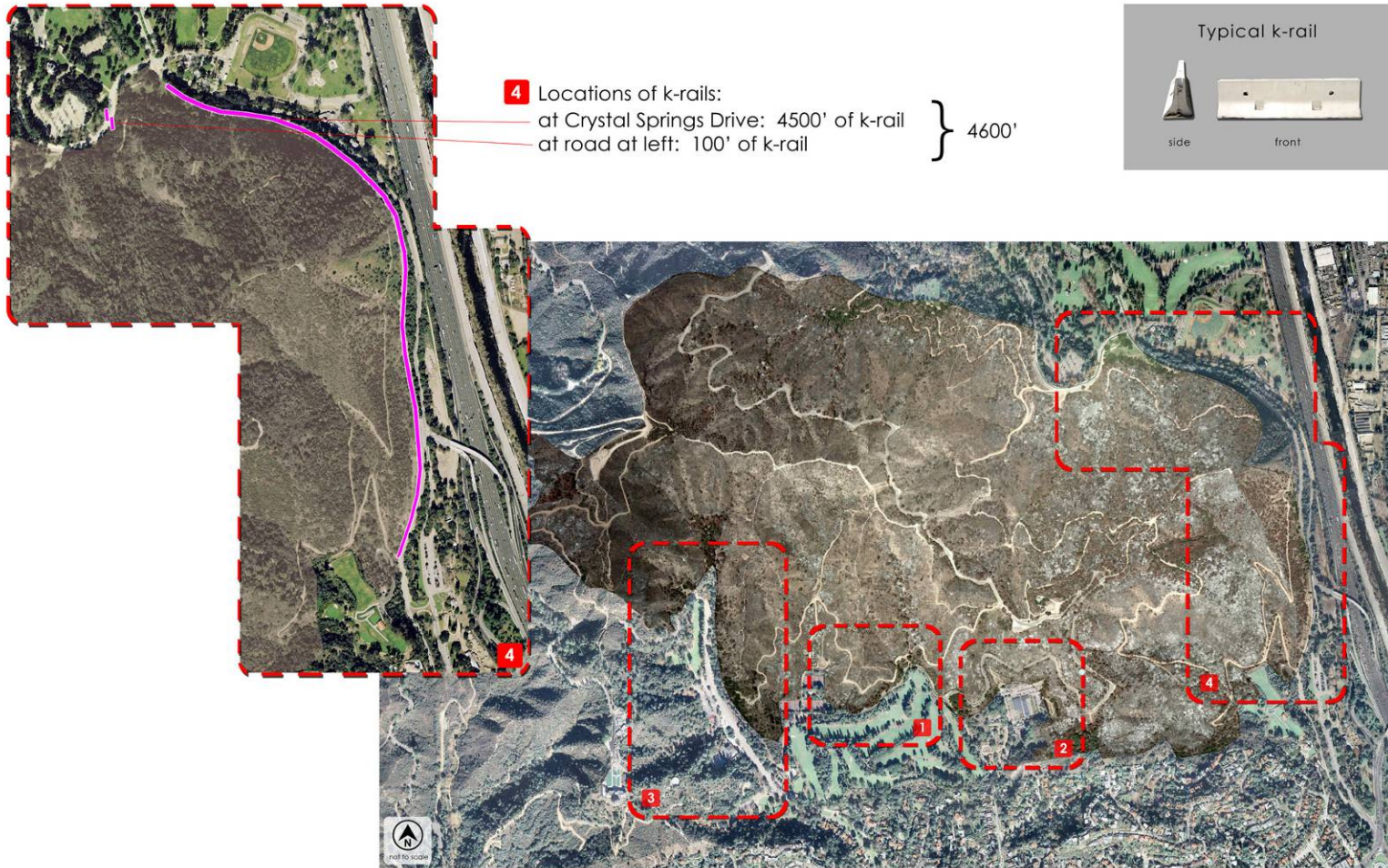
3 OF 4



- 3 Locations of k-rails:
 - at restroom: 60'
 - at water pump: 100' of k-rail
 - at Greek Theatre: 520' of k-rail
 - at Griffith Park entrance: 280' of k-rail
- } 960'



PROPOSED K-RAIL PLACEMENTS AND SEDIMENT CATCH BASINS 4 OF 4





THREE PHASE PLAN

Phase 3: May 2007 – July 2010

Objective: Restoration

Scope:

Vegetation:

- Landscape Restoration
- Implement Vegetative Management Plans
- Habitat Restoration

Infrastructure:

- Roadway Improvements
- Possible Water Infrastructure Repairs and Expansion
- Hogback Trail Bridge Repair and/or Replacement
- Trail/Fire Roads Improvements
- Additional Drainage Infrastructure Improvements

Structural:

- Furniture & Fixture Replacement
- Tregnan & Roosevelt Golf Fencing
- Instructional Signage / Education

- **Invasive Plant Removal Plan**
 - RAP Staff Training
 - Surveys Completed
 - Invasive Plant Removal Has Begun (Volunteer and Staff)
 - Limited Funding
- **Photomonitoring of Recovery**
- **Wildlife Management Plan**
- **Firesafe Landscape Demo Garden**
- **Trail Signage**
- **Cultural Landmark Restoration Planning**

- **Invasive Plant Removal Plan**
 - RAP Staff Training
 - Surveys Completed
 - Invasive Plant Removal Has Begun (Volunteer and Staff)
 - Limited Funding
- **Photomonitoring of Recovery**
- **Wildlife Management Plan**
- **Firesafe Landscape Demo Garden**
- **Trail Signage**
- **Cultural Landmark Restoration Planning**